

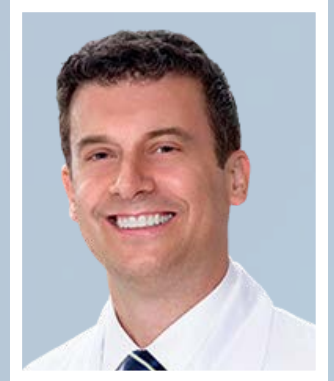


NEWSLETTER

DECEMBER 2025 EDITION

MESSAGE FROM THE PRESIDENT

2025 has been a tremendous year for ELSO. Among ELSO's major achievements, we expanded the resources available to our community through the release of the latest edition of the ECMO Specialist Training Manual and the launch of the Bedside Guide app. Our annual conference in Washington, D.C. was an overwhelming success on all fronts, including breaking our attendance record with more than 1,600 attendees and over 250 speakers.



This year also brought profound loss with the passing of our founder, Dr. Robert H. Bartlett. His impact on our community could never be measured by any conventional means. He was our guiding light, our inspiration. Bob was a truly extraordinary human being. In January, we look forward to honoring his life and legacy as a community in Ann Arbor.

Along with what promises to be an amazing year of meetings for each of our chapters, we are excited to gather together again in Nashville for our Annual Conference; you will not want to miss it.

At ELSO, we wish our entire community the happiest of holidays. And we look forward to all we will accomplish together in the year ahead.

Dan Brodie, President, ELSO

IN THIS ISSUE

President's Message	1
RHB Celebration of Life	2
Conferences	3
Committee Roundup	4
Survey Alley	9
Circuit Chatter	10
Chapter Updates	13
CEO Remarks	15



BARTLETT: A CELEBRATION OF HIS LIFE AND HIS MARVELOUS FRIENDS

JANUARY 26, 2026 | ANN ARBOR, MICHIGAN

This January, our community comes together to honor the remarkable life, spirit, and legacy of Dr. Robert H. Bartlett, a colleague, mentor, friend, and inspiration to so many of us. These two days are designed to be a celebration of the curiosity, generosity, and brilliance he brought to the world.

Sunday, January 25 — A Musical Tribute

4:00–6:30 PM | Hill Auditorium

The event begins with a free concert by the Life Sciences Orchestra, a group especially close to Dr. Bartlett's heart.

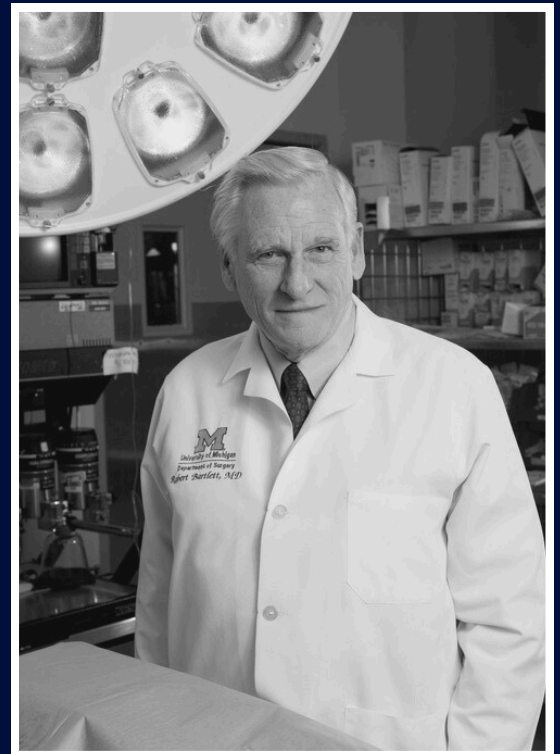
Monday, January 26 — Full-Day Celebration

8:30 AM–9:00 PM | Hill Auditorium & Michigan League

A full day of talks, tributes, and performances will highlight Dr. Bartlett's remarkable impact across medicine, research, mentorship, and the arts. Between sessions, enjoy lunch and dinner at the Michigan League, where stories and memories will continue to flow. We will close out the day with an energetic performance featuring: The Pete Siers Jazz Band, The Michigan Marching Band, & The U-M Men's Glee Club

Can't Attend in Person?

A virtual option will be available for registered guests, so you can join the celebration from anywhere.



REGISTRATION FOR THIS EVENT IS FREE BUT REQUIRED

MORE INFORMATION AND THE LINK TO RSVP: [RHB CELEBRATION OF LIFE WEBSITE](#)

**A COLLABORATION BETWEEN:
MICHIGAN MEDICINE & ELSO**



CHAPTER CONFERENCES



SWAAC ELSO Conference 2026

Location: Chennai, India

Dates: February 5th - February 8th, 2026



14th Annual EuroELSO Conference

Location: Dublin, Ireland

Dates: May 6 - 9, 2026

Website: <https://euroelso-congress.com/>



8th Annual APELSO Conference

Location: Tokyo, Japan

Dates: June 12th - June 14th, 2026



7th Annual LATAM Conference

Location: San Jose, Costa Rica

Dates: November 5th- November 7th, 2026

Website: <https://congresosusp.com/congreso-elso/>

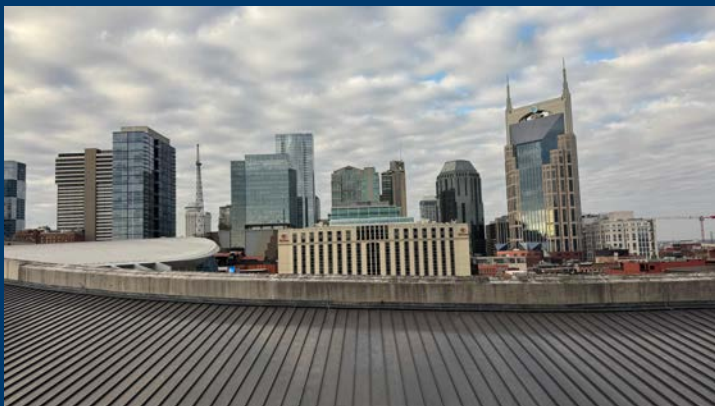
COMMITTEE ROUNDUP

ELSO Conference Committee

Planning is officially underway for our 2026 Annual Conference, taking place at the iconic **Gaylord Opryland Resort & Convention Center** in Nashville, Tennessee from September 28th to October 1st. Our team recently visited the property, exploring the expansive meeting spaces, stunning indoor gardens, and the vibrant atmosphere that makes this venue truly one-of-a-kind. We left energized and inspired, and we can't wait to share more details soon about what's in store.

We anticipate opening conference registration in early 2026, and we hope you'll make plans to join us for a dynamic and enriching scientific gathering. Beyond the sessions and networking opportunities, you'll be steps away from world-class entertainment, dining, and the unmistakable charm of Music City. It's shaping up to be an event you won't want to miss.

Natalie Rintoul, MD
Conference Chair





Education Committee/ELSO Academy

The ELSO Global Education Committee (GEC) is working on many exciting projects. Key updates on a few major projects are detailed here.

1. ELSO Endorsement Revisions: Delphi rounds have been completed and the major updates will be available soon. Great participation was noted from our global partners on this important project.
2. ELSO Train-The-Trainer (TTT) Workshops: EuroELSO TTT in March of 2026 and APELSO in August of 2026. Details for the regions will be forthcoming from the Chapter Education Chairs.
3. ELSO Adult and Neo-Peds Courses for 2026: Please follow closely for the dates to be announced on the website and newsletter early next year.
4. ELSO Initiatives Dashboard: We appreciate all the interest that our community has shown in getting involved with ELSO. We are working hard with the Nominations & Membership Committee on improving the intake and communication processes. Please find the link to the dashboard here: [Get Involved](#)

On behalf of the GEC, we wish you all Happy Holidays!

Upcoming Course Dates

Our Winter and Spring 2026 ELSO Simulation Center Education activities are live on ELSO Academy. We are offering a variety of Adult Simulation, Neo/Peds Simulation, and Cannulation courses in Ann Arbor, MI. Please keep an eye on the [ELSO Website](#) as well as ELSO Academy to see course dates and sign-up!

ELSO Extracorporeal Membrane Oxygenation (ECMO) Adult Simulation Course

[ELSO at SCCM](#): March 20, 2026 (Session 1) & March 21, 2026 (Session 2)

In Ann Arbor: Spring 2026 Dates: April 14-15, 2026 (Session 1) & April 16-17, 2026 (Session 2)

ELSO Adult ECMO Cannulation Workshop (ELSO Office - Ann Arbor MI)

Spring 2026 Dates: April 18, 2026 (Session 1) & April 19, 2026 (Session 2)

All Endorsed courses can be found [HERE](#)

All non-ELSO courses/events can be found [HERE](#).

Quality Committee - Award of Excellence

Congratulations to all of our new 2026-2028 Awardees! Plaques were shipped in early December, and you should be receiving them soon. Access to the Media Toolkit is active for all Center Administrators and AOE Application Users via this link: [AOE Media Toolkit](#)

The 2026 AOE Application period will be opening beginning January 1st. Applications will be accepted until March 15th. We are looking forward to reviewing your materials. Please feel free to reach out to us at awards@elso.org with any questions!

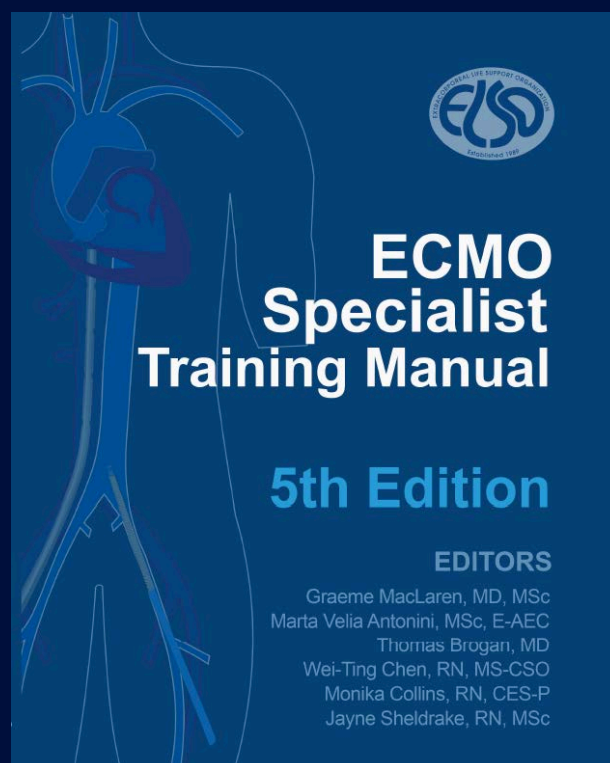


Publications Committee

The 5th Edition of the ECMO Specialist Training Manual is now available through our Publications Website. You can order individual copies or coordinate a group purchase for your team or institution.

Highlights of the new edition include:

- Contributions from 120 authors representing regions across the globe
- 35 chapters featuring updated content and built-in knowledge checks
- A foreword written by Dr. Robert Bartlett
- A special dedication to Dr. Robert and Wanda Bartlett



Visit our website for the full list of publications available [HERE](#).

FROM THE BLUE BOOK.....

Dedication

In the 1960s, Dr Robert Bartlett endeavored to apply cardiopulmonary bypass technology to ICU patients, even persuading his wife, Wanda, to help maintain the machines. The early studies were difficult and the outcomes in the first trial of adult ECMO in 1979 were terrible. It is only because of the incredible tenacity and hard work of the Bartletts that ECMO exists, thereby changing the global landscape of surgery and critical care.

It is a long-standing tradition at ELSO meetings to toast to the memory of Dr Robert E Gross. It is time for an update,

"Here's to the memory of Dr Robert E Gross, and to the ongoing love and abiding affection we have for Dr Robert H Bartlett and Wanda Bartlett, without whom none of us would be here."

This book is dedicated with immense gratitude and affection to Robert and Wanda Bartlett.



Photograph courtesy of Graeme MacLaren, taken at the ELSO conference in Seattle, September 2023.

Nominations & Membership Committee

The ELSO WhatsApp Community continues to thrive as a global hub for ECMO specialists. It's a space where challenging cases are discussed, opinions are shared, and programmatic questions find answers—fostering collaboration and support among professionals worldwide. If you have a question or insight, join the conversation and contribute your expertise to help colleagues across the ELSO network.

To participate, visit the ELSO [website](#) and download WhatsApp on your device. Communities are designed to connect members, encourage collaboration, and provide peer support on key topics.

We're also excited to announce new liaison appointments:

- Melissa Ann Vogelsong will serve as liaison between the Membership and Nominations Committees and the Annual Meeting Committee, enhancing the member experience at the 2026 ELSO Annual Meeting in Nashville.
- Raghu Seethala will act as liaison between the Membership and Nominations Committees and the Education Committee, supporting the ELSO Initiatives Dashboard and expanding opportunities for member engagement.

We encourage members to take full advantage of these resources and opportunities, and thank you for your continued engagement with ELSO.

FELSO

As we reflect on the accomplishments of this past year, we are proud to continue celebrating our 2025 FELSO Recipients: Pranay Oza, Elizabeth Moore, and Christine Stead. Thank you for the lasting impact you continue to make and the inspiration you bring to the ELSO community.

As a reminder, FELSO is the honorary designation recognizing extraordinary contributions to the art and science of ECLS. Applications will receive consideration by the FELSO Nominations Committee. When released in April 2026, the application will be available [here](#). Self-nominations will not be accepted.

For more information please email FELSO@elso.org



2025 FELSO Recipients (Left to Right):
Christine Stead, Pranay Oza, Elizabeth Moore



Research Committee

Please contact research@elso.org for any suggestions you might have for the committee.

Technology & Innovation Committee

The Technology and Innovation Committee is currently seeking committee members with specific interests in developing projects centered around ECMO innovation. Please contact the Committee Chair Timothy Maul, CCP, PhD at tmaul@elso.org for details or to get involved.

SURVEY ALLEY

Spotlight Your Work in Survey Alley!

Have a survey that could benefit from the insight of the global ELSO community? Survey Alley is the perfect place to share it! Each edition of our newsletter highlights current surveys from ELSO members around the world, helping connect researchers, clinicians, and collaborators.

We invite you to take advantage of this opportunity to share your work and engage with colleagues who are passionate about advancing extracorporeal care. Submissions should come from your ELSO Center's Medical Director or Coordinator and include:

- A 2-3 sentence summary of the survey purpose & target audience
- The primary survey contact and their email address
- A link to the survey itself

If you have a survey that you would like us to include in a future edition of the newsletter, please email us at ELSONewsletter@elso.org. We look forward to featuring your work in an upcoming issue!



BEDSIDE WITH BARTLETT

A NOTE ON THE FUTURE OF THE SECTION



Robert Bartlett, MD

Founder, Board of Directors Emeritus
ELSO Professor Emeritus of Surgery University of Michigan

For many years 'Bedside with Bartlett' has been one of the highlights of the ELSO newsletter, allowing the ECMO community to hear Dr Bartlett's numerous insights into specific clinical problems related to ECMO across every age range, indication, and cannulation strategy. However, Dr Bartlett has now expressed a desire to offer this opportunity to others with expertise and wisdom to share. ELSO is throwing open an invitation to everyone in our community to contribute cases which the authors believe demonstrate an important principle (or two) in ECMO management, whether that is in neonatal, pediatric, or adult patients. We encourage ELSO institutions to submit a brief case history to our new Newsletter section 'Circuit Chatter', to highlight both the principal clinical details and learning points for the community, between 300-700 words. This will then be edited and published.

The deadline for potential submissions will be the last day of every odd-numbered month, i.e., 31st Jan, Mar, May, etc.

Please email newsletter@elso.org with your cases and teach the community about what you learned!

CIRCUIT CHATTER

EDITION 5

EDITED BY DR. GRAEME MACLAREN & DR. GILES PEEK

WRITTEN & SUBMITTED BY:

TODD MOVER

MASSACHUSETTS GENERAL HOSPITAL
BOSTON, MA, USA

Question: A 21-year-old male was admitted with necrotizing pneumonia caused by MRSA and influenza A. PaO_2 was 40mmHg with ventilator settings optimized on 100% FiO_2 and PEEP 15cmH₂O, generating a low driving pressure of 10cmH₂O. Due to the refractory hypoxemic respiratory failure, VV ECMO was initiated with a configuration of right femoral vein drain and right internal jugular return. Over the next 24 hours his condition rapidly progressed to multiorgan failure, including acute kidney injury necessitating continuous renal replacement therapy, distributive shock with severe vasoplegia, and disseminated intravascular coagulopathy.

His initial ECMO settings were pump flow 5.5 L/min, 4000 RPMs, 100% FsO_2 , sweep gas flow 7 L/min. After turning and repositioning, the ECMO console alarmed as flows abruptly decreased from 5.5 L/min to 4.0 L/min on the same RPMs. The patient desaturated to 80%. The RPMs were increased and the patient stabilized, but 4400 RPMs were now required to generate the same pump flow.

To maintain ECMO blood flow, the RPMs had to be increased at a rate of ~100/hr. There was no visible clot in the tubing or membrane lung. Pressures within the membrane lung were stable. What other information can we use to determine the cause of the inability to maintain blood flow?

Answer: This scenario highlights the importance of monitoring venous drainage pressure (P_{ven}) to distinguish between a membrane lung, cannula or pump problem.

In this scenario, a clot got sucked into the pumphead acutely, then over time the clot grew in size, requiring more RPMs to generate the same 5.5 L/min of flow. Under normal circumstances when you increase RPMs, the pump spins faster, the venous pressure is more negative, and results in higher blood flow. If you find yourself



increasing RPMs and the venous drainage pressure stays the same or over time, trends to be relatively more positive, this should make you suspicious of pump thrombosis. This scenario highlights that a clot in the pumphead can happen acutely or progress over time. The clot burden was visible after a circuit change and inspection of the old circuit.

A great analogy is to think of a square shaped "box" fan. A brand-new fan is efficient and moves significant amounts of air to cool you off. As time goes on it accumulates a thick layer of dust on the fan blades. This makes it less efficient and the fan, spinning at the same speed, moves less air. The same principle applies to a centrifugal blood pump. Clot and fibrin formation in the pump will make the pump less efficient at moving blood and require the pump to spin faster (higher RPMs) to move the same amount of blood as before.



ELSO CHAPTER UPDATES: ECMO AROUND THE WORLD

APELSO

Upcoming Meeting Locations: APELSO 2026 Conference will be held June 12-14, 2026 in Tokyo, Japan as a joint conference with the Japanese Society for Therapeutics and Engineering at Hamamatsucho Convention Hall. APELSO 2027 will be held in Bali, Indonesia in June 2027.



Abstract Submissions for APELSO 2026: Abstract submissions will be open from December 1st to February 14th. We welcome submissions that showcase innovation, research, education, and valuable cases or clinical experience. APELSO 2026 presentations offer a wonderful opportunity to share your ideas and insights with colleagues and global experts in the field.

Shingo Ichiba, APELSO Chair

LATAM ELSO

Please join us for the 7th Annual LATAM Conference, being held in San Jose, Costa Rica in November 2026. Up to date news and event information can be found on our website: elsolatam.net.

Guillermo Moreno, LATAM ELSO Chair





ELSO CHAPTER UPDATES: ECMO AROUND THE WORLD

SWAAC ELSO

SWAAC ELSO App: The SWAAC ELSO app is now available, please download it to stay up to date on news and activities.

You can find a list of all ECMO courses in the SWAAC ELSO region through the SWAAC ELSO app including India, Qatar, UAE, South Africa and many more. You can also submit any ECMO course within the SWAAC ELSO region through the app in the add your course section.

You can download the app [here](#).

2026 SWAAC ELSO Annual Meeting: Mark your calendar for the next annual meeting which will be in Chennai, India on 5-8th February 2026.

Huda Alfoudri, MD, SWAAC ELSO Chair



EuroELSO

- **2026 EuroELSO Congress:** The wider faculty and EuroELSO team are delighted to invite you to join us at the next EuroELSO Congress which will be held in Dublin between 6th – 9th May 2026 with the pre-Congress meeting being held on 6th and 7th May. More information can be found on the congress website [here](#).
- **Call for Abstracts at 2026 EuroELSO:** Manuscripts and abstract submissions are currently open and will remain so until January 4, 2026. Abstract submission guidelines and the submission portal can be found [here](#).



Mirko Belliato, EuroELSO Chair



CHIEF EXECUTIVE OFFICER REMARKS

This time of year we come together with friends and family. There is magic in the air – the extra effort that we put into sharing our appreciation, gratitude, and best laughs with each other. You can see it: lights that shine brighter in the darkest time of the year, decorations that people lovingly placed for everyone to enjoy, treats to share, and the best hugs.

The achievements of 2025 that we share together are many. Some are more obvious than others (Bedside Guide App, Specialist Training Manual, our most collaborative Scientific Conference with exceptional content to name a few). Our biggest loss was of our dear founder and friend, Dr. Bartlett. His inspiration will only grow.

In January, per Dr. Bartlett's wishes, we will come together to do what he asked: celebrate his life and his marvelous friends! I hope to see you there on January 26th in Ann Arbor, Michigan at his beloved university with many performances and reflections. The program is taking great shape thanks to many, including Ron Hirschl, Jay Zwischenberger, the University of Michigan Department of Surgery team, and ELSO's team. All are welcome!

At this event, we will release his memoirs (Bob Bartlett: Clinician, Researcher, Friend, His Stories). He worked on his memoirs in the last months of his life. Integrity, relentless curiosity, friendship, mentorship – his key characteristics shine through these stories. His memoirs will be available through ELSO's publications page after his celebration event. More events are taking shape that will keep his influence and inspiration present among us. A special thanks to his dear friends Ron Hirschl, Jay Zwischenberger, and Pearl O'Rourke for their thoughtful edits.

Looking ahead, 2026 will start with a celebration of Dr. Bartlett and his marvelous friends. All ELSO chapters will convene a scientific conference in 2026. ELSO will continue to be the motor for research in extracorporeal life support, and we are looking forward to sharing more about this soon. We remain committed to using data to advance knowledge. This is our foundation and with it, we can make the improvements that matter for our patients and the community we serve.

Thank you for this collaborative, multidisciplinary, ELSO community and family where all have a seat at the table. We are so fortunate to get to work together with each other.

Cheers to you and yours! Thank you for a wonderful year and happy holidays.

Christine Stead, CEO



The Extracorporeal Life Support Organization

Our Mission

Providing global leadership in extracorporeal life support through innovation, advocacy, and advancing knowledge.

Our Vision

ELSO will be the premier organization for the advancement of extracorporeal life support throughout the world.

Guiding Principles

Innovation

Seeking to identify and promote advances for the application of extracorporeal therapies.

Expertise

Bringing together world leaders in the care of critically ill patients for collaboration to advance quality of care through education and publication.

Clinical Support

Maintaining a comprehensive registry of data to assist in reducing morbidity and improving survival of patients requiring extracorporeal therapies.

Community

Fostering communication and collaboration among professionals who apply advanced technologies in the treatment of refractory organ failure.



@ELSO.Org



@ELSOOrg



@elso_official



@ELSO



@TheELSO

The Extracorporeal Life Support Organization (ELSO)
3001 Miller Road, Ann Arbor, Michigan 48103, USA

www.elso.org

For editorial concerns related to this newsletter, please contact newsletter@elso.org.

Copyright © 2025 The Extracorporeal Life Support Organization. All Rights Reserved.